

Technical data

Flow properties

Eco-flow at 3 bar	6.0 l/min
Flow-rate at 3 bar	12.0 l/min

Technical properties

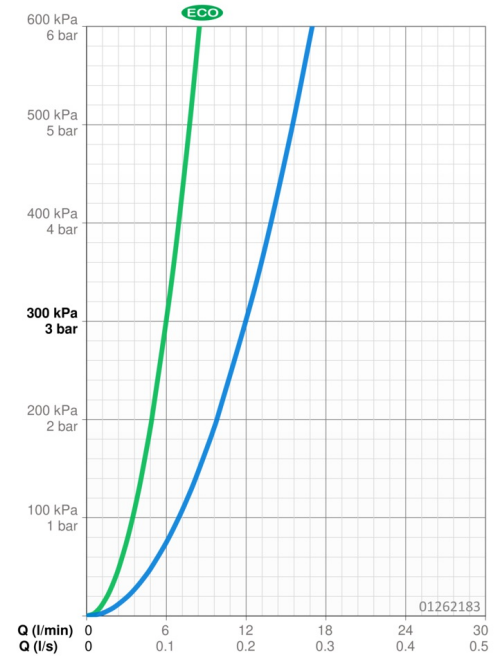
DN-size (nominal dimension)	DN15
Hot water supply	max. +70°C
Working pressure	1-10 bar
Connection size	Ø 10 mm
Projection	119 mm
Backflow prevention (EN1717)	EB
Material	Brass

Regulations

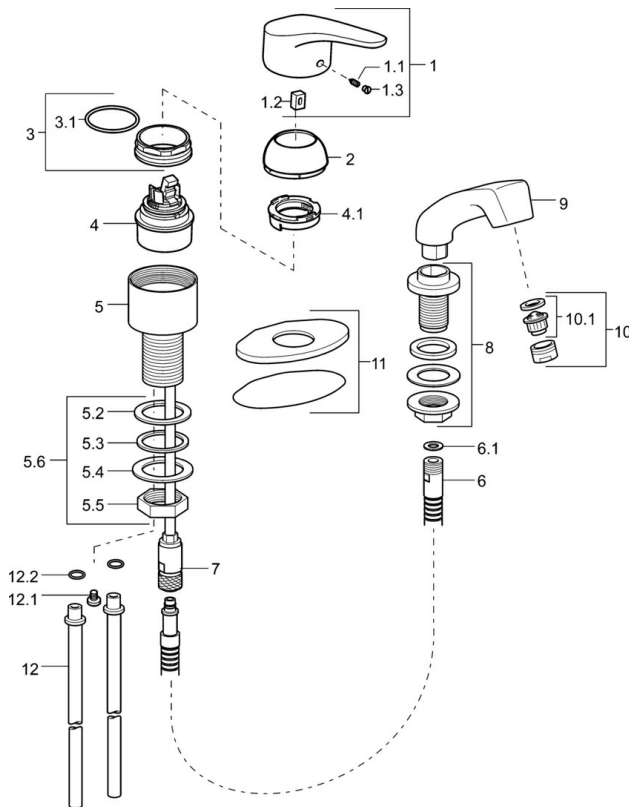
EN standard	EN 817, EN 1112, EN 1113
-------------	---------------------------------

Approvals and Declarations

KIWA	K6116/08
Declaration of conformity	DoC



Spare parts



SP01262183

Name	Code
1 Lever, L=93 mm	01880083
1.1 Screw, M5x8, SW2.5	59904755
1.2 Bushing	59904778
1.3 Symbol plug Grey	59912112
2 Covering cap	59912638
3 Eye screw, M50x1, SW45	59904775
3.1 O-ring, d 43x2.5	59911166
4 Cartridge, 4.8 eco	59904601
4.1 Hot water limiter	59904759
5.2 Gasket, 41.5x33.3x2	59902295
5.3 Gasket, 48x33.5x2	59902283
5.6 Fixing set Discontinued	59912347
6 Hose, L=1250	59902137
6.1 Gasket, 13.5x8x1	59902311
7 Nipple	59912074
8 Passing-through bushing	59910055
9 Hand shower	59910054
10 Aerator, M24x1 STD HC B	59905830
10.1 Aerator, M22/M24 B	59905901
11 Cover flange	59911328
12 Flexible pipe, L=430, G3/8-M8x1	59913964
12 Pipe, d 10 mm, L=413	59911423
12.1 Attachment clamp Discontinued	59911416
12.2 O-ring, 9x2	59905095