

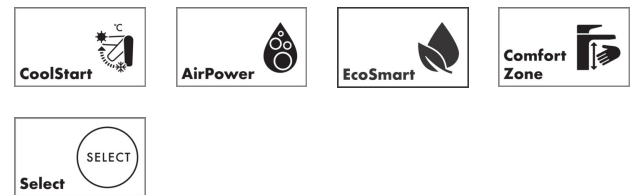
**AXOR One**  
**Basin mixer Select 140 with push-open waste set**  
 Finish: **Chrome** Article Number: **48010000**



### product features

- consists of: Basin mixer, waste set
- ComfortZone: 140
- projection: 122 mm
- spout height: 140 mm
- handle variant: Select
- spray type: normal spray
- maximum flow rate at 3 bar: 5 l/min
- Select cartridge with temperature control
- Select push-button on/off control
- temperature limitation adjustable
- suitable for continuous flow water heaters
- push-open waste set G 1¼
- material waste set: metal
- connection type: G ¾ hose connections
- connection dimension: DN15
- cold water in basic handle position
- EU taxonomy: max. 6 l/min - Substantial Contribution (SC) possible

### Technology



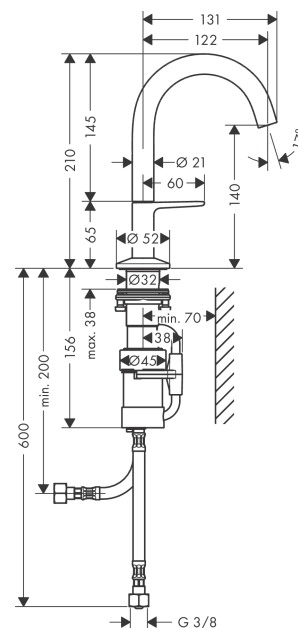
### Design awards



### Product image



### Scale drawing



**AXOR One**  
**Basin mixer Select 140 with push-open waste set**  
Finish: **Chrome** Article Number: **48010000**



## Flowchart

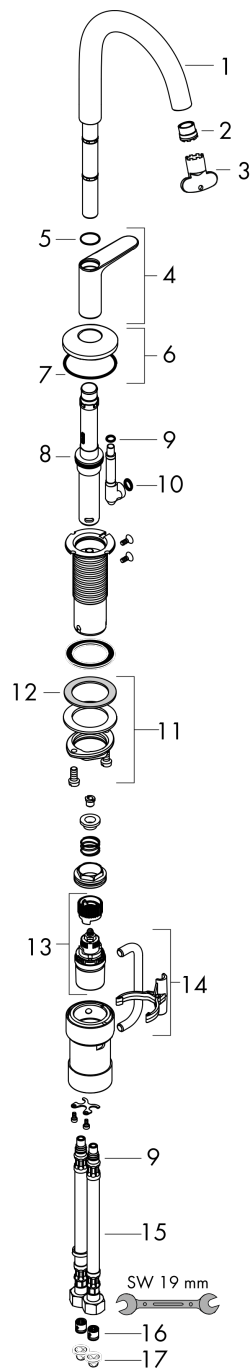


**AXOR One**  
**Basin mixer Select 140 with push-open waste set**  
 Finish: **Chrome** Article Number: **48010000**



## Exploded Drawing

Year of production: >04/21



**AXOR One**  
**Basin mixer Select 140 with push-open waste set**  
 Finish: **Chrome** Article Number: **48010000**



## Spare part list

Year of production: >04/21

Pos.		Article Number	PC	PU
1	spout cpl.	94233000	14	1
2	aerator cpl.	93118000	7	1
3	special tool	98987000	3	1
4	handle	94238000	15	1
5	O-ring 17x1	94259000	1	1
6	escutcheon	93998000	9	1
7	O-Ring 46x2	98195000	1	1
8	O-ring 24x2,5	98145000	1	1
9	O-ring 7x1,5	98422000	1	1
10	O-ring 8x2	98112000	1	1
11	fixing set (Ø 32)	13961000	7	1
12	lever collar	97548000	1	1
13	cartridge, assy	92529000	14	1
14	connection angel	94262000	11	1
15	connection hose 450 mm M8x0,75 G3/8	93405000	9	1
16	non return valve DW 10	96456000	3	1
17	filter packing	95291000	4	1
a	push-open waste set	50100000	98	1
b	fixation extension 35 mm	13898000	12	1