

EAN: 4057304017520

[static.hansa.com/54442207](http://static.hansa.com/54442207)



When great design becomes an attraction of its own, you know it will make a difference in your life. Besides bringing beauty to life, this new classic is also designed to bring any modern bathroom to the next level.

Elegant designed Rosetta for good installation coverage

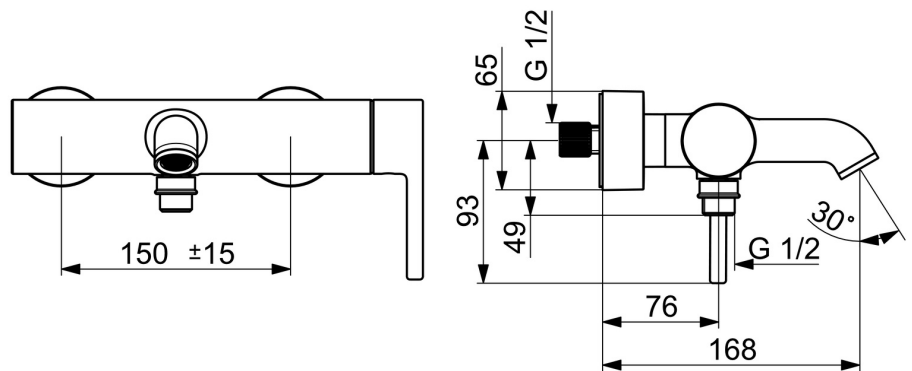
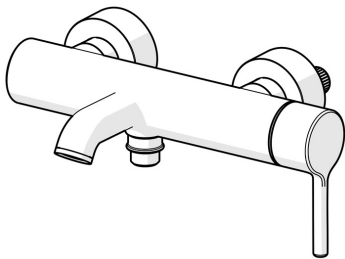
High quality

Sleek design

Made in Europe

Shower and bath faucet - Perfect fit for any bathroom

- Bathtub & Shower
- Single-lever, side operated
- Wall mounted
- Chrome
- Fixed spout
- Standard aerator
- Single operating lever/handle, Pin shape, Hot/Cold symbols
- Pull operated diverter, Automatic reset
- Limitation option for maximum temperature and flow-rate, Adjustable hot water stop (included, retrofittable)
- ø 40 mm ceramic cartridge for flow and temperature control
- Eccentric coupling(s), Cover plate(s)
- Inner body made of DZR brass
- protected against back-flow in domestic use (according to DIN EN 1717)



## Technical data

### Flow properties

Flow-rate at 3 bar **21.0 / 15.0 l/min**

### Technical properties

Hot water supply **max. +80°C**  
 Working pressure **0.5-10 bar**  
 Connection size **G3/4**  
 Installation width **150 ± 15 mm**  
 Projection **168 mm**  
 Backflow prevention (EN1717) **EB**  
 Material **Brass**

### Regulations

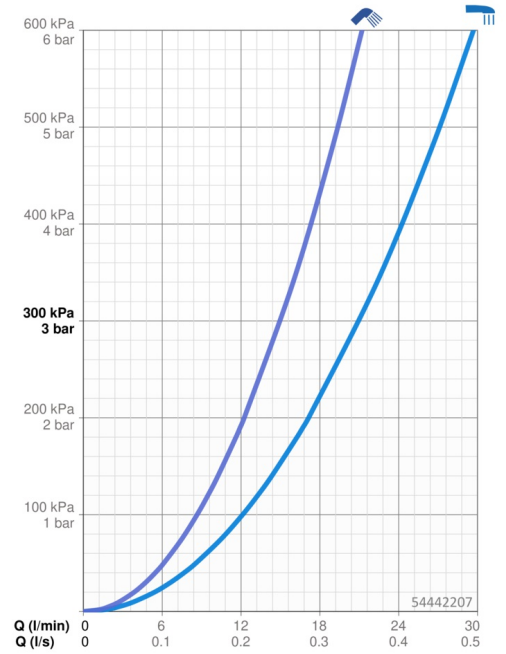
EN standard **EN 817**  
 Noise class **II (ISO 3822)**

### Approvals and Declarations

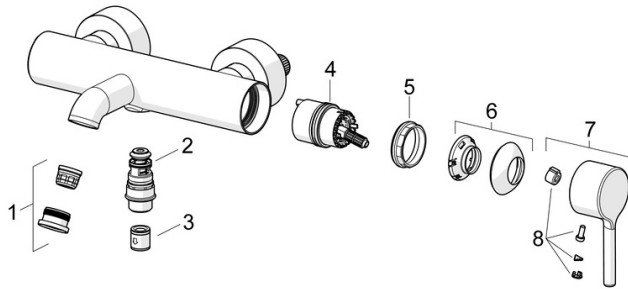
Declaration of conformity **DoC**  
 EPD **S-P-06397**

### Sustainability

EPD module A1 (kg CO2 eq.) **13,09**  
 EPD module A2 (kg CO2 eq.) **0,61**  
 EPD module A3 (kg CO2 eq.) **1,51**  
 EPD module A1-A3 (kg CO2 eq.) **15,20**  
 EPD module A4 (kg CO2 eq.) **0,54**  
 EPD module B7 (kg CO2 eq.) **2637,50**  
 EPD module C2 (kg CO2 eq.) **0,03**  
 EPD module C3 (kg CO2 eq.) **0,03**  
 EPD module C4 (kg CO2 eq.) **1,08**  
 EPD module D (kg CO2 eq.) **-9,65**



## Spare parts



### SP54442207

	Name	Code
01	Aerator and key, STD B Laminar	1014220V
02	Diverter	59914663
03	Non-return valve	59905714
04	Cartridge	59914665
05	Tightening nut, M42x1.5, SW 38	59914128
06	Covering cap	59914649
07	Lever	1014994V
08	Symbol plug	59914573