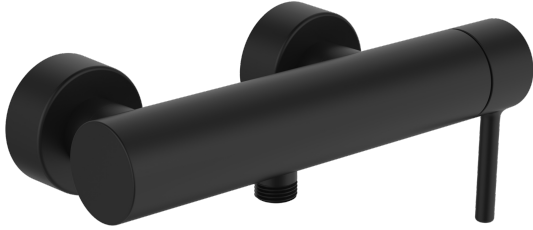


EAN: 4057304020278
static.hansa.com/5445010733



When great design becomes an attraction of its own, you know it will make a difference in your life. Besides bringing beauty to life, this new classic is also designed to bring any modern bathroom to the next level.

Elegant designed Rosetta for good installation coverage

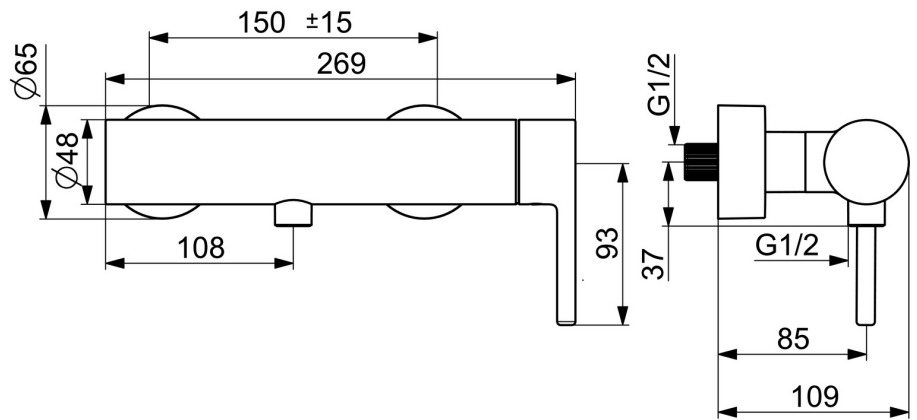
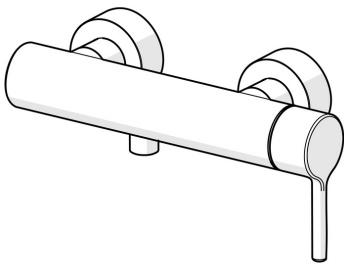
High quality

Sleek design

Made in Europe

Shower faucet - Perfect fit for any bathroom

- Shower solutions
- Single-lever, side operated
- Wall mounted
- Matt black
- Single operating lever/handle, Pin shape, Hot/Cold symbols
- Limitation option for maximum temperature and flow-rate, Adjustable hot water stop (included, retrofittable)
- \varnothing 40 mm ceramic cartridge for flow and temperature control, Non-return valve(s)
- Eccentric coupling(s), Cover plate(s)
- Inner body made of DZR brass
- protected against back-flow in domestic use (according to DIN EN 1717)



Technical data

Flow properties

Flow-rate at 3 bar **12.6 l/min**

Technical properties

Hot water supply **max. +80°C**
 Working pressure **0.5-10 bar**
 Connection size **G3/4**
 Installation width **150 ± 15 mm**
 Backflow prevention (EN1717) **EB**
 Material **Brass**

Regulations

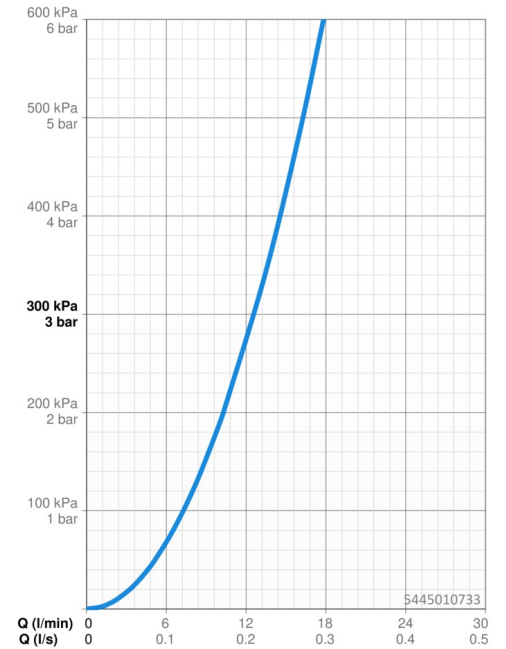
EN standard **EN 817**
 Noise class **I (ISO 3822)**

Approvals and Declarations

Declaration of conformity **DoC**
 EPD **S-P-06397**

Sustainability

EPD module A1 (kg CO2 eq.) **11,11**
 EPD module A2 (kg CO2 eq.) **0,52**
 EPD module A3 (kg CO2 eq.) **1,28**
 EPD module A1-A3 (kg CO2 eq.) **12,90**
 EPD module A4 (kg CO2 eq.) **0,46**
 EPD module B7 (kg CO2 eq.) **2215,50**
 EPD module C2 (kg CO2 eq.) **0,02**
 EPD module C3 (kg CO2 eq.) **0,02**
 EPD module C4 (kg CO2 eq.) **0,92**
 EPD module D (kg CO2 eq.) **-8,19**



Spare parts

SP5445010733

	Name	Code
01	Non-return valve	59905714
02	Cartridge	59914665
03	Tightening nut, M42x1.5, SW 38	59914128
04	Lever Matt black	1014994V-33

